

Local Area Networks

Lecture #8

Contents

LAN Design Elements

IEEE 802 LANs

IEEE 802.3 MAC Frames and Addresses

WANs and LANs

Wide Area Networks

- ▶ Connect devices/networks over large geographical area
- ▶ Between campuses, office buildings, cities, countries
- ▶ Owned and operated by organisations on behalf of users, e.g. TOT, CAT, TT&T
- ▶ Leased to users, e.g. unis, companies, smaller ISPs

Local Area Networks

- ▶ Connect end-user devices over small area
- ▶ Within campuses, buildings, homes
- ▶ Owned and operated by organisation using the network
- ▶ Typically support higher data rates than WANs (internal communications, multiplexing)

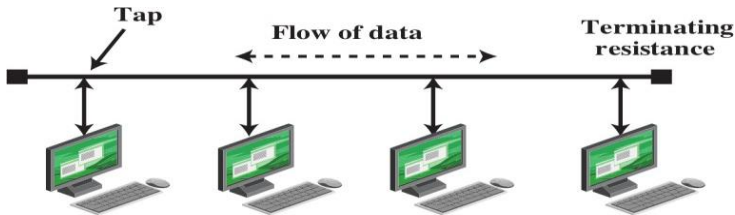
LAN Design Elements

1. Topology: what is the arrangement of connections between nodes?
2. Transmission medium: what medium is used for the links?
3. Medium access control: how to control access for stations on a shared medium?

1. LAN Topology

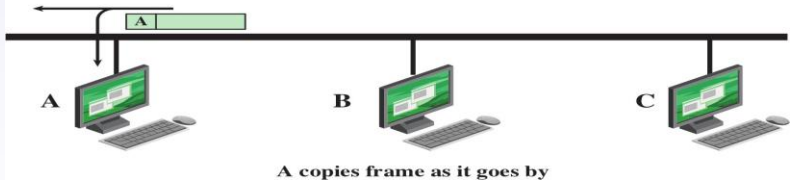
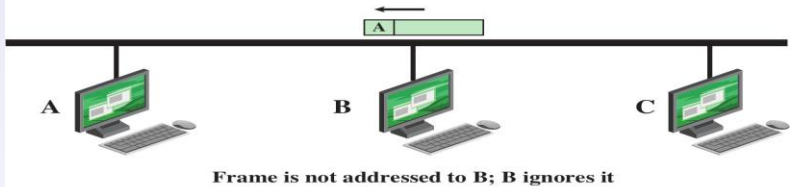
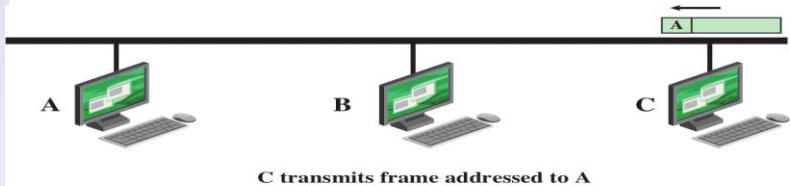
- ▶ Recall link configurations: point-to-point and multipoint
- ▶ LANs allow multiple users to communicate with each other
- ▶ Topology is arrangement of nodes and links
 - Mesh** every station has point-to-point link to every other station
 - Bus** every station connected via a multipoint link
 - Ring** point-to-point links between pairs of stations to form ring
 - Star** every station has point-to-point link to central device
 - Hybrid** combination of 2 or more of above, e.g. tree is combination of star and bus topologies
- ▶ Mesh only suitable for very small LANs; requires many links. (Partial mesh used in some WANs)

Bus Topology

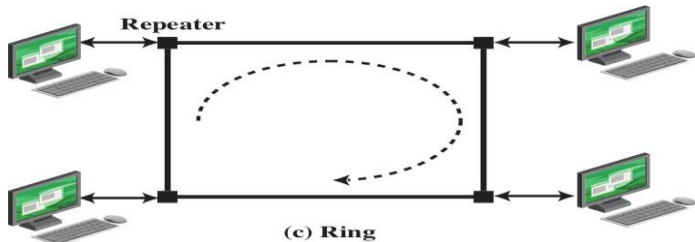


- ▶ Single multipoint link connects all stations (via tap)
- ▶ Transmission propagates throughout medium and is heard by all stations
- ▶ Terminator absorbs frames at end of medium/cable
- ▶ Frames need addresses
- ▶ Pros: easy installation
- ▶ Cons: require protocols to share medium; faulty link stops all communications; limited number of stations
- ▶ Usage: Early Ethernet networks, but replaced by star

Frame Transmission on a Bus LAN



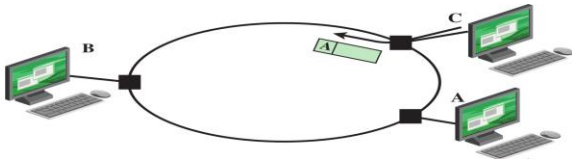
Ring Topology



- ▶ Unidirectional point-to-point links to form loop
- ▶ Stations attach to repeaters
- ▶ Frames need addresses
- ▶ Pros: simple to install and reconfigure; easy to identify faults
- ▶ Cons: require protocols to share medium; traffic flows in one direction
- ▶ Usage: old LANs (e.g. IBM Token Ring); MANs and WANs

Frame Transmission on a Ring LAN

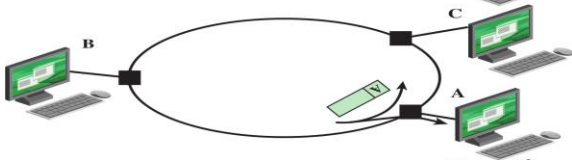
(a) C transmits frame addressed to A



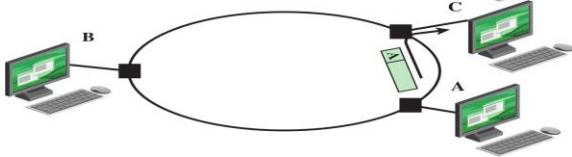
(b) Frame is not addressed to B; B ignores it.



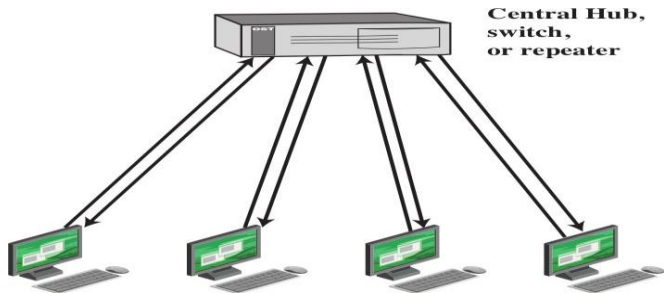
(c) A copies frame as it goes by



(d) C absorbs returning frame



Star Topology



- ▶ Traffic between stations goes via the central node
- ▶ Usually two point-to-point links between station and central node (or duplex link)
- ▶ Frames needed addresses
- ▶ Pros: easy to install; fault tolerance for links
- ▶ Cons: depends on central node
- ▶ Usage: Most LANs today

2. Transmission Medium

- ▶ Many factors impact on the most appropriate transmission medium for a LAN: reliability, expandability, performance, building layout, medium availability
- ▶ Common cases include:
 -) Coaxial cable often used for bus topology
 -) Optical fibre for ring topology; usually the highest speed networks
 -) Twisted pair for star topologies; often well-suited for LANs in buildings (cheap, easy to install)

3. Medium Access Control

- ▶ In a shared medium, if two (or more) stations transmit at the same time, there is a chance the two transmissions will interfere with each other
- ▶ **Collision** of frames: receiver receives two or more frames partially overlapping in time; assume all frames are corrupted/lost
- ▶ **Medium Access Control**: allow one station to use the shared medium at a time (avoiding collisions)
- ▶ MAC techniques must give stations opportunities to transmit: fair and efficient
- ▶ Techniques can be:
 -) Centralised or distributed
 -) Fixed or dynamic

MAC Examples

- ▶ Round-Robin MAC
- ▶ Reservation-based MAC
- ▶ Random-access MAC

Contents

LAN Design Elements

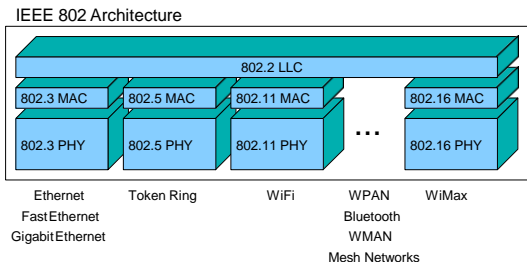
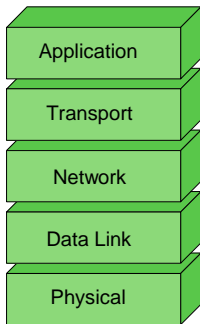
IEEE 802 LANs

IEEE 802.3 MAC Frames and Addresses

IEEE 802 LAN Architecture

- ▶ IEEE 802 LAN/MAN standards committee has developed the majority of the LAN standards in use including:
 -) Ethernet, Fast Ethernet, Gigabit Ethernet, Token Ring, Wireless LAN (WiFi), ...
- ▶ 802 series of standards follow common architecture
- ▶ Standardised only at Physical layer and Data Link layer
- ▶ Data Link layer divided into: Logical Link Control (LLC) and Medium Access Control (MAC)
- ▶ 802 can support many MAC/Physical protocols, and uses one common LLC protocol

IEEE 802 LAN Architecture



LLC = Logical Link Control

MAC = Medium Access Control

PHY = Physical

Characteristics of Some High-Speed LANs

	Fast Ethernet	Gigabit Ethernet	Fibre Channel	Wireless LAN
Data Rate	100 Mbps	1 Gbps, 10 Gbps, 100 Gbps	100 Mbps - 3.2 Gbps	1 Mbps - 54 Mbps
Transmission Media	UTP, STP, optical fiber	UTP, shielded cable, optical fiber	Optical fiber, coaxial cable, STP	2.4-GHz, 5-GHz microwave
Access Method	CSMA/CD	Switched	Switched	CSMA/Polling
Supporting Standard	IEEE 802.3	IEEE 802.3	Fibre Channel Association	IEEE 802.11

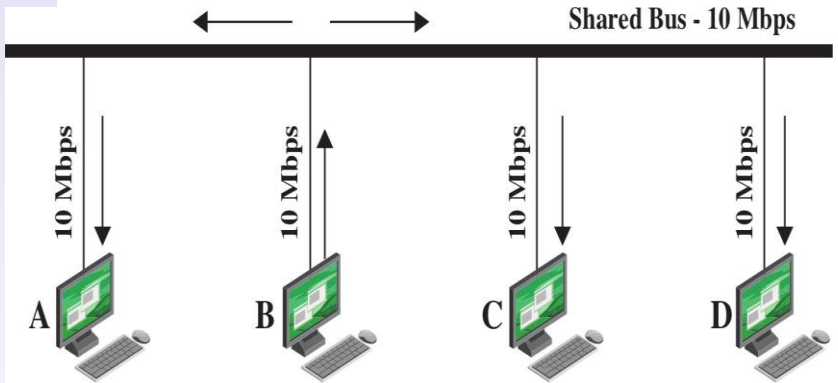
IEEE 802.3: Ethernet

- ▶ IEEE 802.3 defines one of the most commonly used LAN standards in the world
- ▶ Ethernet developed in 1970's; standardised as IEEE 802.3
- ▶ Various improvements: Fast Ethernet, Gigabit Ethernet, 10Gb/s Ethernet
- ▶ Support various physical media: UTP, STP, coaxial cable, optical fibre
- ▶ Original popular Ethernet:
 -) Bus topology
 -) Coaxial cable
 -) 10Mb/s
 -) Contention-based Random-Access MAC (CSMA/CD)
 -) Half-duplex
- ▶ Replaced by star topology with twisted pair

IEEE 802.3 10-Mbps Physical Layer Medium Alternatives

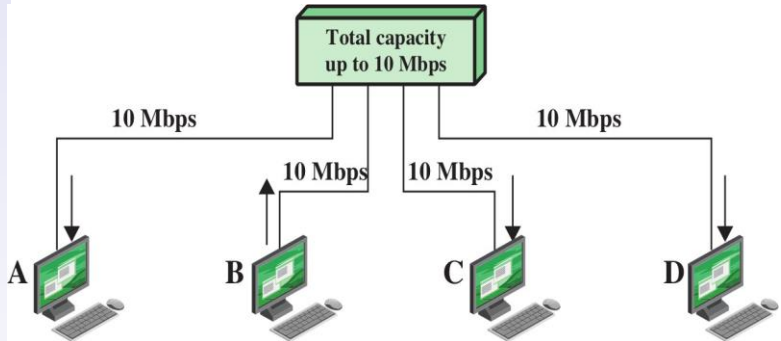
	10BASE5	10BASE2	10BASE-T	10BASE-FP
Transmission medium	Coaxial cable (50 ohm)	Coaxial cable (50 ohm)	Unshielded twisted pair	850-nm optical fiber pair
Signaling technique	Baseband (Manchester)	Baseband (Manchester)	Baseband (Manchester)	Manchester/on-off
Topology	Bus	Bus	Star	Star
Maximum segment length (m)	500	185	100	500
Nodes per segment	100	30	—	33
Cable diameter (mm)	10	5	0.4 to 0.6	62.5/125 μm

Shared Medium Bus



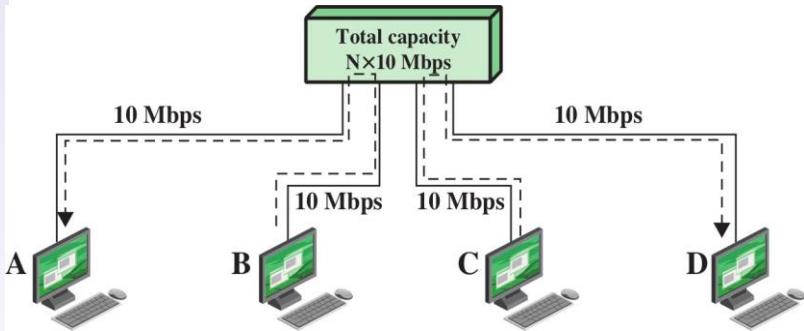
Shared Medium Hub

Hub: receives a frame on an input link, and transmits a copy of that frame on all other output links



Layer 2 Switch

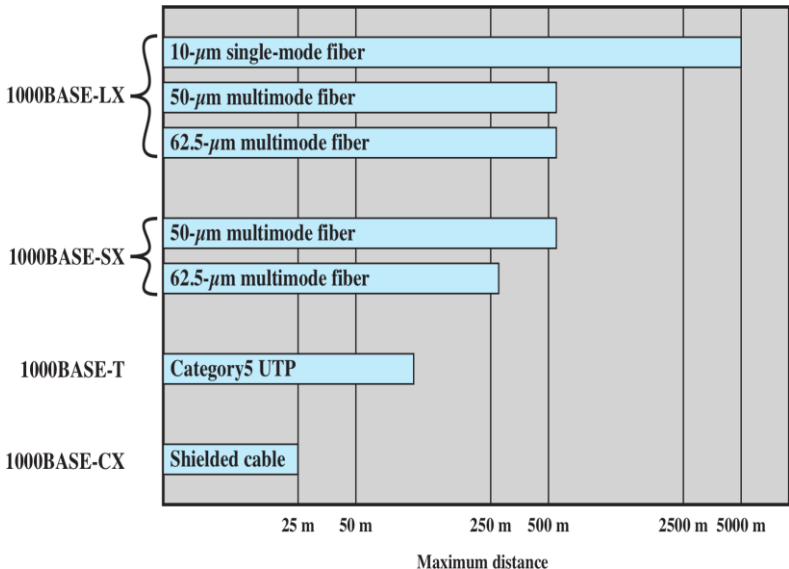
Switch: receives a frame on an input link, looks at the destination address, and transmits the frame on the intended output link



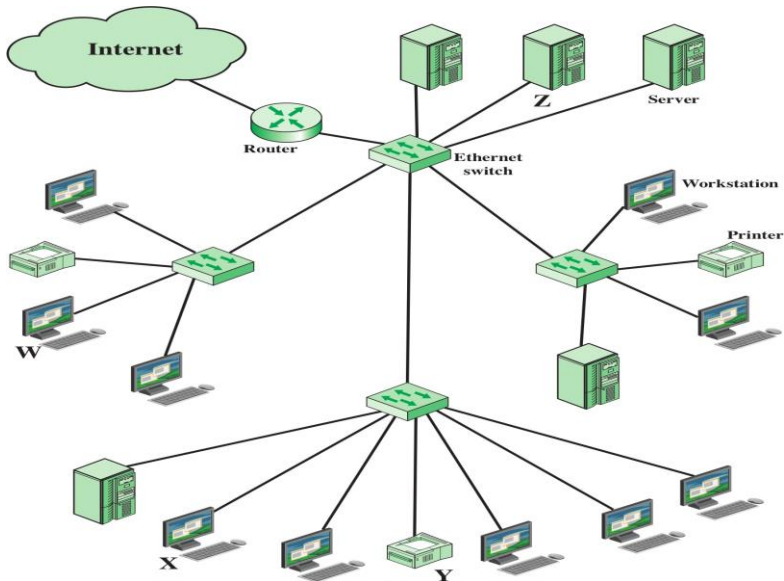
IEEE 802.3 100BASE-T Physical Layer Medium Alternatives

	100BASE-TX		100BASE-FX	100BASE-T4
Transmission medium	2 pair, STP	2 pair, Category 5 UTP	2 optical fibers	4 pair, Category 3, 4, or 5 UTP
Signaling technique	MLT-3	MLT-3	4B5B, NRZI	8B6T, NRZ
Data rate	100 Mbps	100 Mbps	100 Mbps	100 Mbps
Maximum segment length	100 m	100 m	100 m	100 m
Network span	200 m	200 m	400 m	200 m

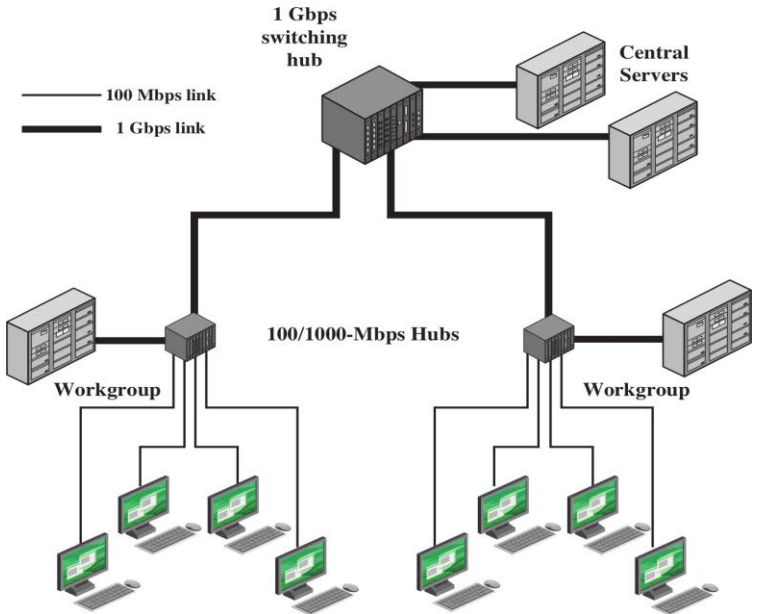
Gigabit Ethernet Medium Options (log scale)



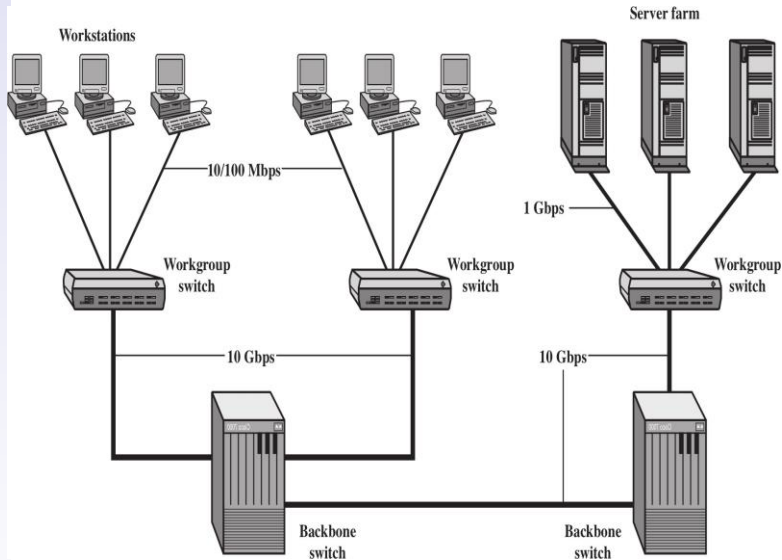
Example LAN Configuration



Example Gigabit Ethernet Configuration



Example 10 Gigabit Ethernet Configuration



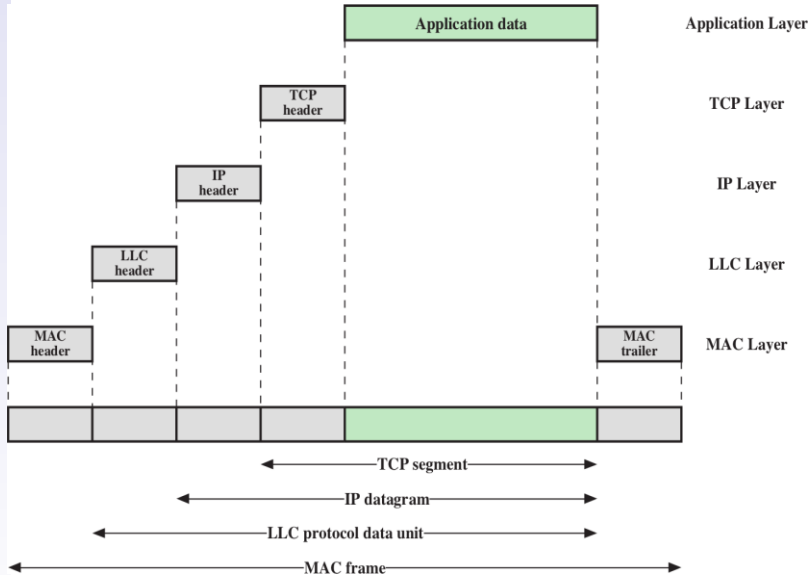
Contents

LAN Design Elements

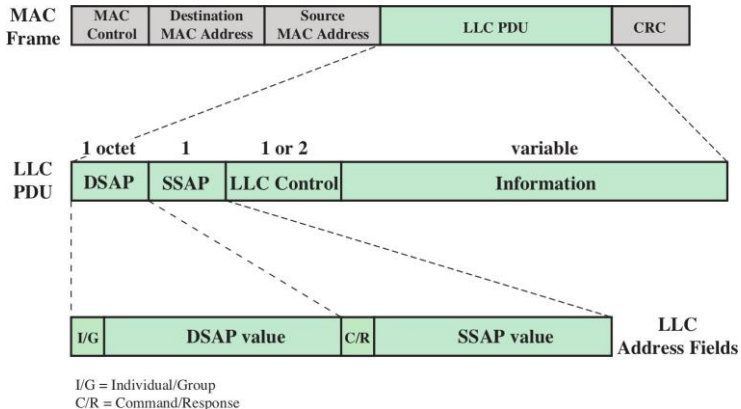
IEEE 802 LANs

IEEE 802.3 MAC Frames and Addresses

MAC Frame Compared to Other Layers

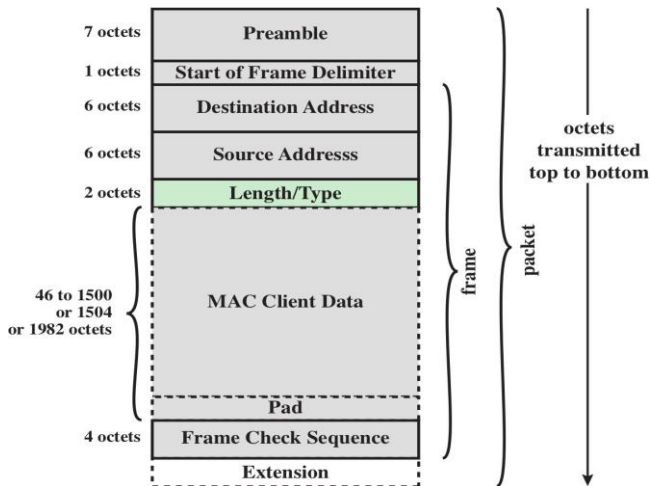


LLC PDU in a Generic MAC Frame Format



- ▶ LLC traditionally provided link level flow and error control and multiplexing
- ▶ Today, in many IP networks LLC features are not needed; IP datagram encapsulated directly into MAC frame with 2 Byte EtherType field

IEEE 802.3 MAC Frame Format



- ▶ Typical maximum data size is 1500 Bytes
- ▶ 1st 8 bytes (preamble, delimiter) sometimes considered part of Physical layer

IEEE 802 Addresses

- ▶ IEEE 802 standards use common IEEE 48-bit address format
- ▶ Globally unique (ideally)
 -) First 24-bits assigned by IEEE to manufacturer
<http://standards.ieee.org/regauth/oui/>
 -) Second 24-bits assigned by manufacturer to device
- ▶ For simplicity, represented as 6 × 2 digit hexadecimal numbers
- ▶ Common in other standards: Bluetooth, ATM, FDDI, FibreChannel
- ▶ IEEE 64-bit address is new format: Firewire, ZigBee, IPv6